



HAI YANG SHI YOU 289



深圳海油工程水下技术有限公司
COOEC Subsea Technology Co., Ltd.

GENERAL DESCRIPTION

Name:	HAI YANG SHI YOU 289
Type:	MP Subsea Construction Vessel
Owner:	COOEC (China Offshore Oil Engineering Co., Ltd.)
Design:	STX OSCV 11 L
Built by:	NB 776 STX Søviknes Norway
Year of Build:	JUNE 2013
Accommodation:	100 persons
Gross Tonnage:	8922
Net Tonnage:	2677
IMO No:	9657882
Call Sign	BYLD
Area of Operation:	Worldwide
Flag:	China

Classification

1A1, E0, DYNPOS-AUTR(IMO II), DK(+), CRANE, HELDK, ICE-1B, DEICE, CLEAN DESIGN, NAUT-OSV, COMF-V(3)C(3), SPS-2008

TECHNICAL SPECIFICATION

Main Dimensions

Overall length:	120.8 m
Length between p.p:	110.8 m
Breadth molded:	22.0 m
Depth main deck:	9.0 m
Draft (max):	6.6 m

Deck Equipment

2 x Windlass/Mooring winches fwd. Hatlapa
2 x Mooring winches aft - Hatlapa
2 x Provision cranes -
Cargotech/MacGregor 3t

Deck Space

Deck Material:	Steel/wood
Moonpool Work:	7.2 x 7.2 m
Moonpool ROV:	4.8x 5.5m
Main Deck Area:	1350m ² 10t/m ²

DP System

DPII	Kongsberg SDP 21 (DP2)
Ref.Systems	Gyrocompass
	3xSTD22 Anschutz
	2 x DGPS (Seatex 132 & 232)
	1 x Radius 1000
	2 x Hipap 500
	2 x Seapath 300
	1 x Cyscan

NAV/Com

2 x Furuno X-Band/1 x Furuno S-Band radar

Power & Propulsion

Main:
4 x Wartsila 6L32 each 2880 kW
(total 11520 kW)
SCR System
Em. Gen:
1x Nogva Scania DI 1262 m 285 kW

Thruster

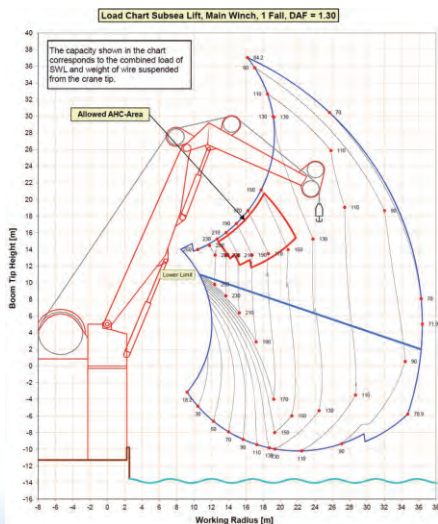
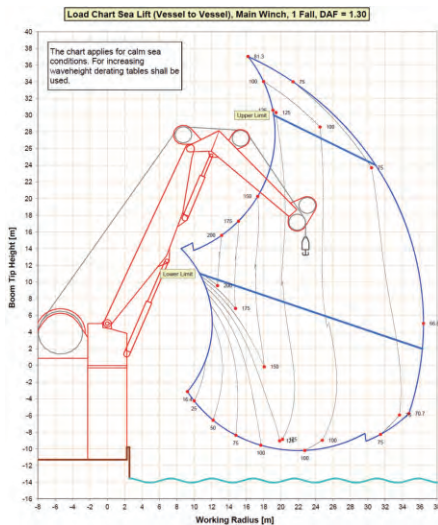
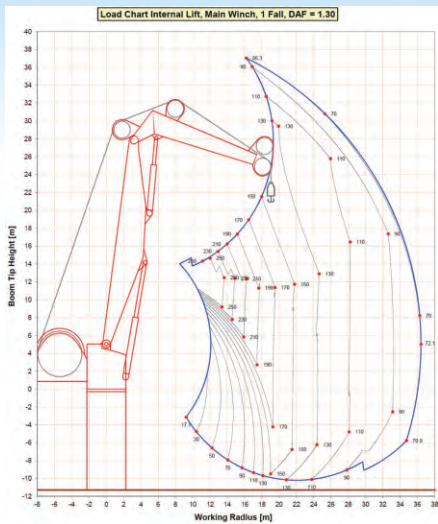
Stern
2 x RR Contaz 35 (Ice strenghtened)
each 3000 kW
Bow
2 x RR TT2650 each 1900 kW
1 x RR TCN92M each 1500 kW

Rescue

1 x Weedo 700 - 222 hp waterjet.
1 x Midget 500 mkII - 50 hp outboard.
2 x 106p Norsafe JYN100 Life boats
(100% each side)
2 x Viking Liferrafts 25 pers

Accommodation

100 persons
2 Day rooms
2 Client Cabins
Project meeting room
Conference room
Sky lobby / cinema
Gymnasium
Helideck reception
24 Single Cabins / 38 Double Cabins



Helicopter Deck

Supplier: Maritime Products AS
 D-value: 21m
 Aircraft type: S92 Sikorsky
 Classification: NMD,CAP437,MODU1989,DNV

Speed

Maximum Estimated full speed of 16 knots
 Transit Speed of 13 knots

Fuel Consumptions

In Port: 3 m³/24 hrs
 Transit: 25 m³/24 hrs
 Full Speed: 43 m³/24 hrs
 DP: 7-15 m³/24 hrs
 (depend on the weather)

Tank Capacities

Fuel oil : 1780
 DW/BW: 4893
 FW: 1016
 MEG/Brine: 593

CRANE

Offshore Cranes

1 x National Oilwell 250 t Subsea AHC Knuckle Boom Crane.
 Main winch max lifting capacities 250 t, 96mm wire, length 2500 m.
 Operation radius 12-36 m.
 Aux winch max lifting capacities 20 t, 34mm wire, length 2500 m.
 Operation radius 9-40 m.

Deck Cranes

2 x Electro-Hydraulic deck / provision cranes.
 Each crane capacity: 3.0 t/15 m

ROV

Schilling HD 32 / 05 ROV



Vehicle

150 HP system, 112KW

Depth Rating 3000m

Vehicle Dimensions

Length 2400

mm×Width 1700 mm×Height 1900mm

Speed

Fwd/Aft 3.2 knots

Lateral 2.3 knots

Vertical 2.5 knots

Bollard pull

Forward, 900 Kg

Lateral, 900 Kg

Vertical, 850 Kg

Payload 250 Kg

Manipulators

7 function Schilling Titan 4

5 function Schilling Rigmaster

Auto Function

Auto Heading/Depth/Altitude/Roll/Pitch

Stationkeep (DP)

Camera

(5) Kongsberg

(1 HD color camera fiber output)

(1) TITAN 4 Wrist camera

Lights

(10) Variable 120VAC/ 250W

Pan&Tilt 2 Electric Pan & Tilt Unit

Valve Pack (2) 8-function

TMS

Schilling XE™ 900m tether

Capacity, with 425m tether

LARS Active Heave Compensated

4th Floor, Technology Building, No.1067, Nanhai Road, Shekou, Shenzhen, China. 518067

Tel: 86-755-26894862

Fax: 86-755-26694615

E-mail: weixc@mail.cooec.com.cn

URL: www.cooecsubsea.com