



HAI YANG SHI YOU 286



深圳海油工程水下技术有限公司
COOEC Subsea Technology Co., Ltd.

GENERAL DESCRIPTION

Name:	HAI YANG SHI YOU 286
Type:	MP Subsea Construction Vessel
Owner:	COOEC (China Offshore Oil Engineering Co., Ltd.)
Design:	SDARI
Delivery:	Q4 2014
Accommodation:	150 persons
Gross tonnage:	17649
Net tonnage:	5294
Call Sign:	BFBF6
IMO No:	9662239
Flag:	China

Main Functions

Deepwater heavy structure lift and subsea installation works.

Deepwater umbilical/flexible/
cable flex-lay.

IMR (Inspection, Maintenance and Repair).

TECHNICAL SPECIFICATION

Main Dimensions

Overall length:	140.75 m
Length between p.p:	127.85 m
Breadth molded:	29.0 m
Depth main deck:	12.8 m
Draft (max):	8.5 m

Classification(DNV/CCS)

DNV+ 1A1, ICE-E, SPS, DPS3, CRANE, HELDK, BIS, COAT-PSPC(B), CLEAN, E0,NAUT-OSV(A), DK(+), COMF-V(3)C(3) CSA, Special Purpose Ship (2008), Ice Class B, DP-3, Lifting

Appliance, Helicopter Facilities, PSPC (B), In Water Survey

CSM, AUT-0, OMBO, Clean, COMF (NOISE 3), COMF (VIB 3)

Deck Equipment

2 x Windlass/Mooring winches fwd.-MEP

2 x Mooring winches aft-MEP

2 x Provision cranes

Deck Space

Moon pool :	7.2 m x 7.2 m
Main Deck Area:	1900 m ²

DP System

DP III : A redundant Dynamic Positioning (DP) system,

Type: Kongsberg K-Pos DP-22 and K-Pos DP-12

NAV/Com

1 x MF/HF SSB Simplex radio Telephony Station 150 W.

2 x EPIRB Cospas/Sarsat free-float beacon .

2 x Radar transponders for life-raft/boat (9 GHZ)

3 x Portable waterproof VHF radios.

Satellite communication, mobile telephones/fax

VHF / UHF and mobile telephones/fax/ VHF/ UHF

Internal communication systems

1 x complete PA system and 1 x telephone system to be installed.

Infrastructure / LAN

Radar information

Radar 1 (3cm) Sperry Marine CATIC34

Radar 2 (10cm) Sperry Marine CATIC34

Power & Propulsion

4 X Wartsila , W8L32,(3850X4)kw@750rpm

2 X Wartsila , W6L32,(2930X2)kw@750rpm

Em.Gen: 1 x 500 kW

Mooring & Anchor handling Winch

Two individual operated winches /250 t

AR rope reel diameter: 92 mm

Length: 3250 m

Thrusters

Stern:

2 x azimuth thrusters Max.Continuous rating : abt. 4500 kW each

Bow:

2 x tunnel thrusters forward. Rating

abt. : 2200 kW

1 x Retractable azimuth thruster.

Rating : 2200 kW

Rescue

Life boat

2 x fiberglass reinforce plastic, totally enclosed type lifeboats.

1 x life boat on each side, with capacity of 50% (75persons).

2xFast Rescue Craft/ Man Over Board Boat.

Type of engine power on the FRC boats:

BUKHD250,184kw 3800rpm.

2 x davit launched type inflatable life rafts , with capacity of 20 persons.

Accommodation

28 single cabin / 39 double cabins / 11 cabins with 4 beds

Helicopter Deck

D-value: 22 m

Max. take-off-mass: 12.8 t

Aircraft type : Sikorsky S-92,
S-61 and Euro Copter EC225
Super Puma MKII.

Speed

Maximum Estimated full speed of 12 knots

Transit Speed of 11 knots

Fuel consumption

In port: 5.6 m³/24 hrs

Transit: 30 m³/24 hrs

DP: 17 m³/24 hrs

FW Making Capacity: 47 m³/24 hrs
(depend on weather)

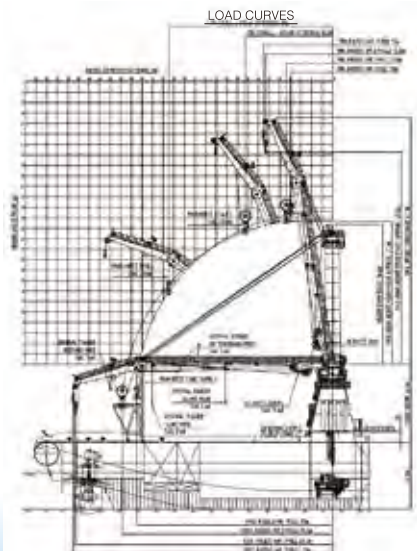
Tank Capacities

Marine Gas oil/diesel oil, abt. : 2800 m³

Potable water, abt. : 750 m³

Water ballast, abt. : 7300 m³

Rig chain lockers abt. : 1000 m³



CRANE

1 x 400 Te HUISMAN AHC Crane Master Type Crane

SWL (2 falls) @ 16.5m: 400 Te

SWL (1 fall) @ 31.5m: 200 Te

Dynamic factor: 1.1

Working Range

Single line: 7.8-37.0 m

2 falls: 8.8-39.5 m

Storage Capacity

Hook travel, single line: 3000 m

Main Hoist Wire Rope

Wire rope diameter: 92 mm

Wire rope MBL: 650 Te

1x 50Te MacGregor AHC Crane Master Type crane

SWL: 50 t @ 15 m (onboard)

20 t @ 30 m (onboard)

50 t @ 14 m Subsea/AHC

18 t @ 30 m Subsea/AHC

Dynamic factor: 1.3

Working Range

Single line: 7-30m

Storage capacity

Hook travel ,single line: 300m

Main Hoist Wire Rope

Wire rope diameter: 57mm



ROV

Schilling UHD 78 / 79 ROV

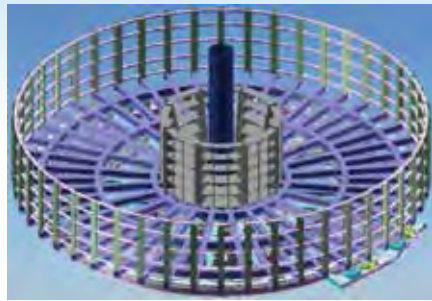


Vehicle	
HPU	200 HP system, 149 kW
Depth rating	3000m
Vehicle dimensions	Length 3000 mm×Width 1900 mm×Height 2000mm
Speed	Fwd/Aft 3.2 knots Lateral 3.2 knots Vertical 2.5 knots
Bollard pull	Forward/Aft, 1200 Kg Lateral, 1200 Kg Vertical, 1000 Kg
Payload	350 Kg
Manipulators	7 function Schilling Titan 4 5 function Schilling Rigmaster
Valve Pack	(2) 8-function
TMS	Schilling XE™ 900m
tether Capacity, with 850m tether	

CAROUSEL

1x2500 tonnes Basket Type Basket General

Outer diameter:	19.3 m
Inner core diameter:	6.0 m
Basket height (net):	3.8 m
Volume abt.:	1150 m ³
Maximum speed abt.:	1.0 rpm
Rollers:	Fixed to foundation
Weight:	Total Weight within 450Te



Loader Arm

Maximum product diameter:	17" (432mm)
Designed for product MBR:	0.5 m

Performance

Linear Speed: 1000 m/Hr requested

325mT Vertical Lay System (Under Construction)

Maximum line tension:	325 mT
Maximum A & R capacity:	400 mT
Auxiliary A & R capacity:	100 mT
Hang-off clamp capacity:	360 mT
Flexible product outer diameter:	50~630 mm
Aligner wheel diameter:	6.6 m
Moon pool hatch:	7.2*7.2 m
Maximum operation depth:	3000 m



4th Floor, Technology Building, No.1067, Nanhai Road, Shekou, Shenzhen, China. 518067

Tel: 86-755-26894862

Fax: 86-755-26694615

E-mail: weixc@mail.cooec.com.cn

URL: www.cooecsubsea.com